



Direction Régionale de l'Environnement
ILE-DE-FRANCE
BASSIN SEINE-NORMANDIE

Document d'objectifs – Annexes 2
Sites Natura 2000 n° FR1100795 et FR1110795
du massif de Fontainebleau



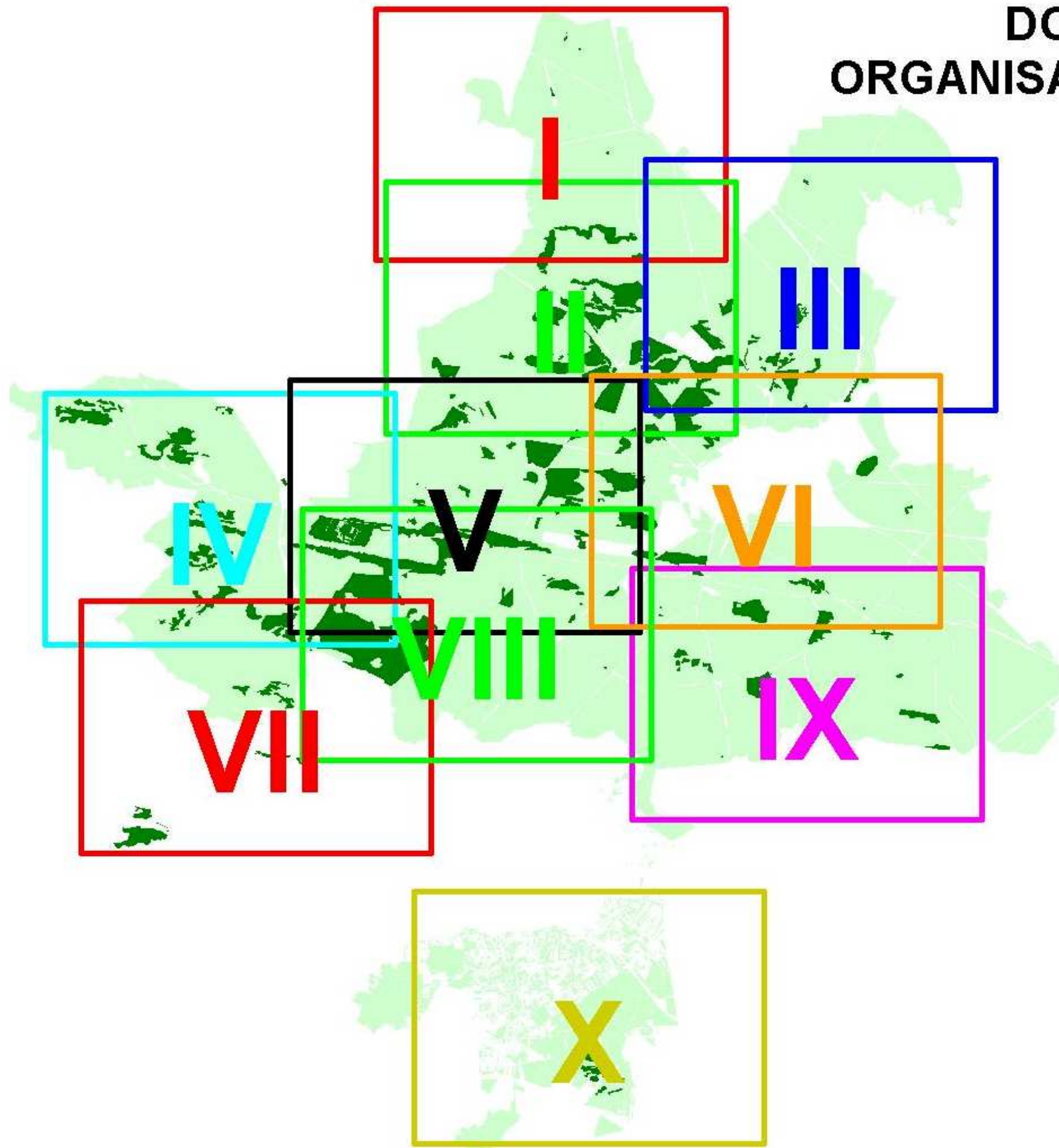
Atlas de positionnement
des habitats d'intérêt
communautaire



MINISTÈRE
DE L'AGRICULTURE
ET DE LA PÊCHE

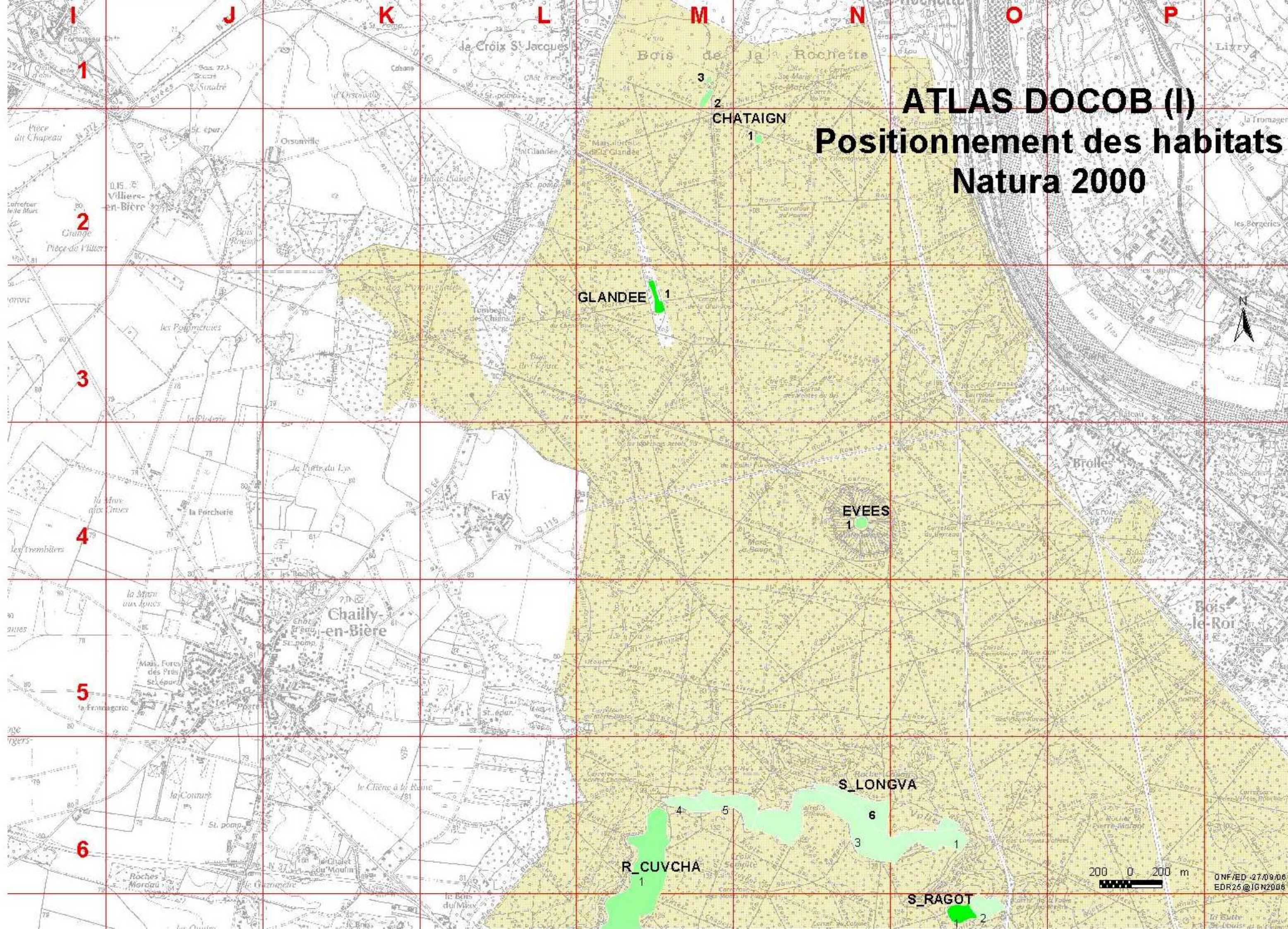


DOCOB ORGANISATION ATLAS



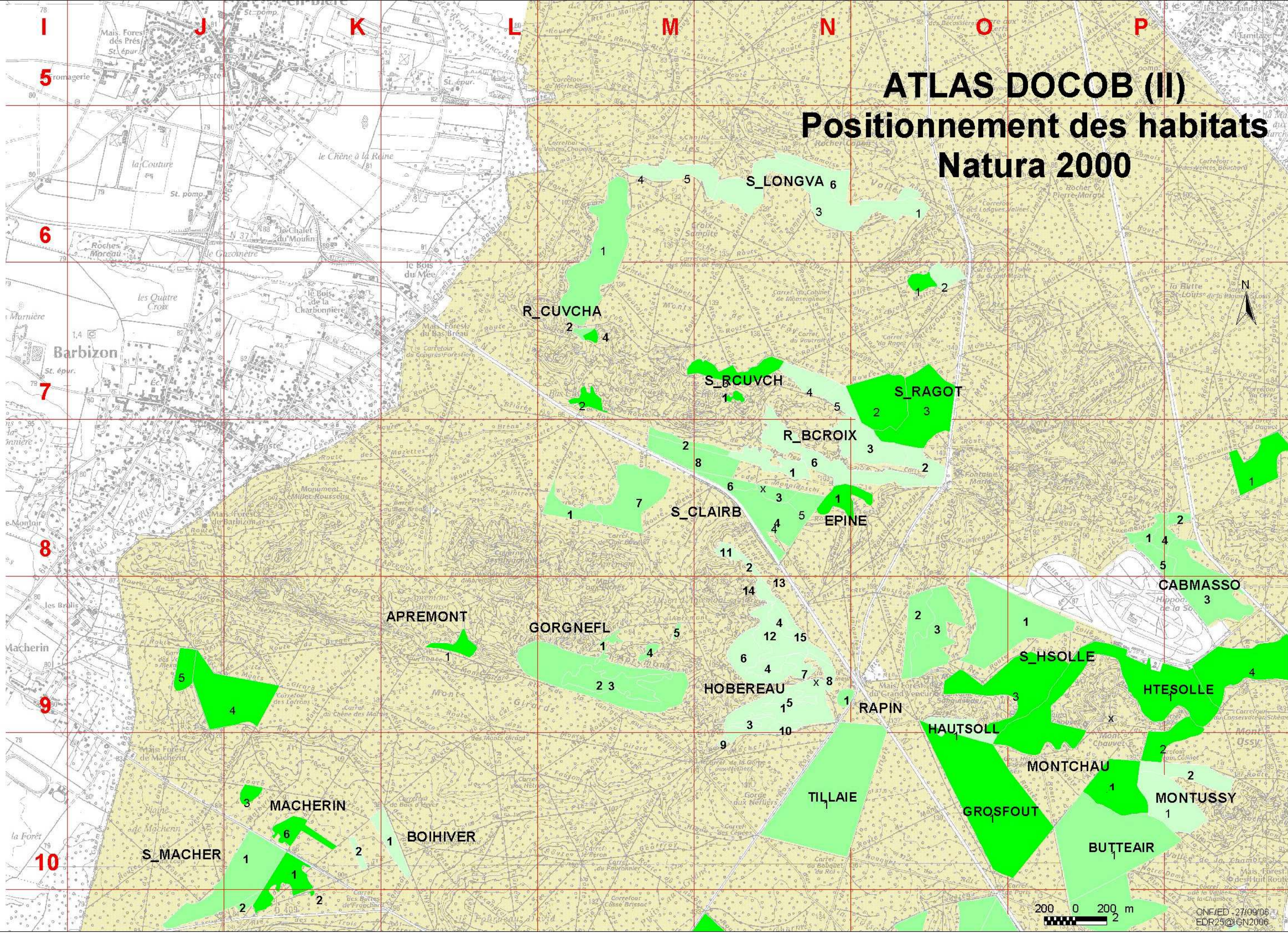
ATLAS DOCOB (I)

Positionnement des habitats Natura 2000



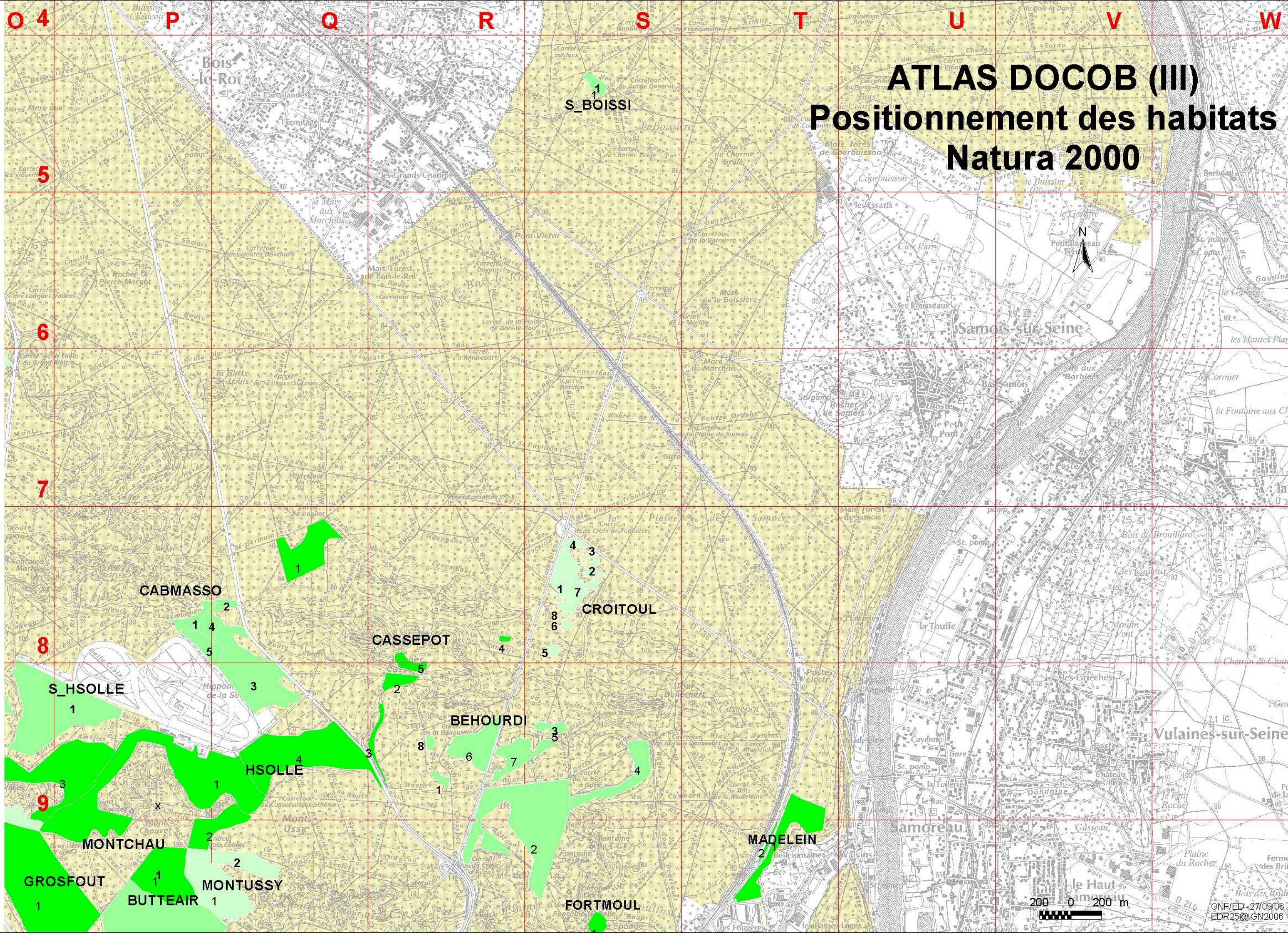
ATLAS DOCOB (II)

Positionnement des habitats Natura 2000

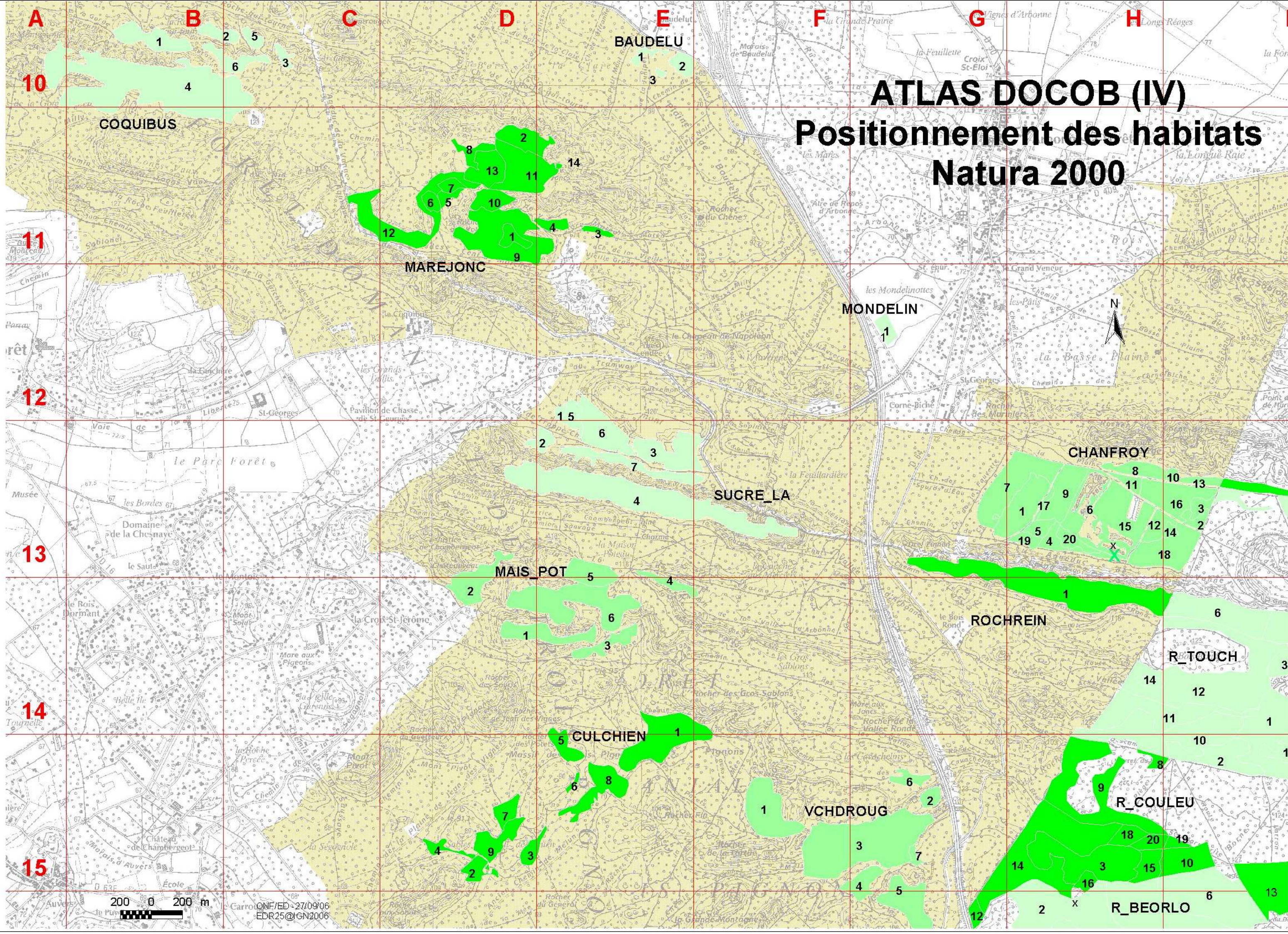


ATLAS DOCOB (III)

Positionnement des habitats Natura 2000

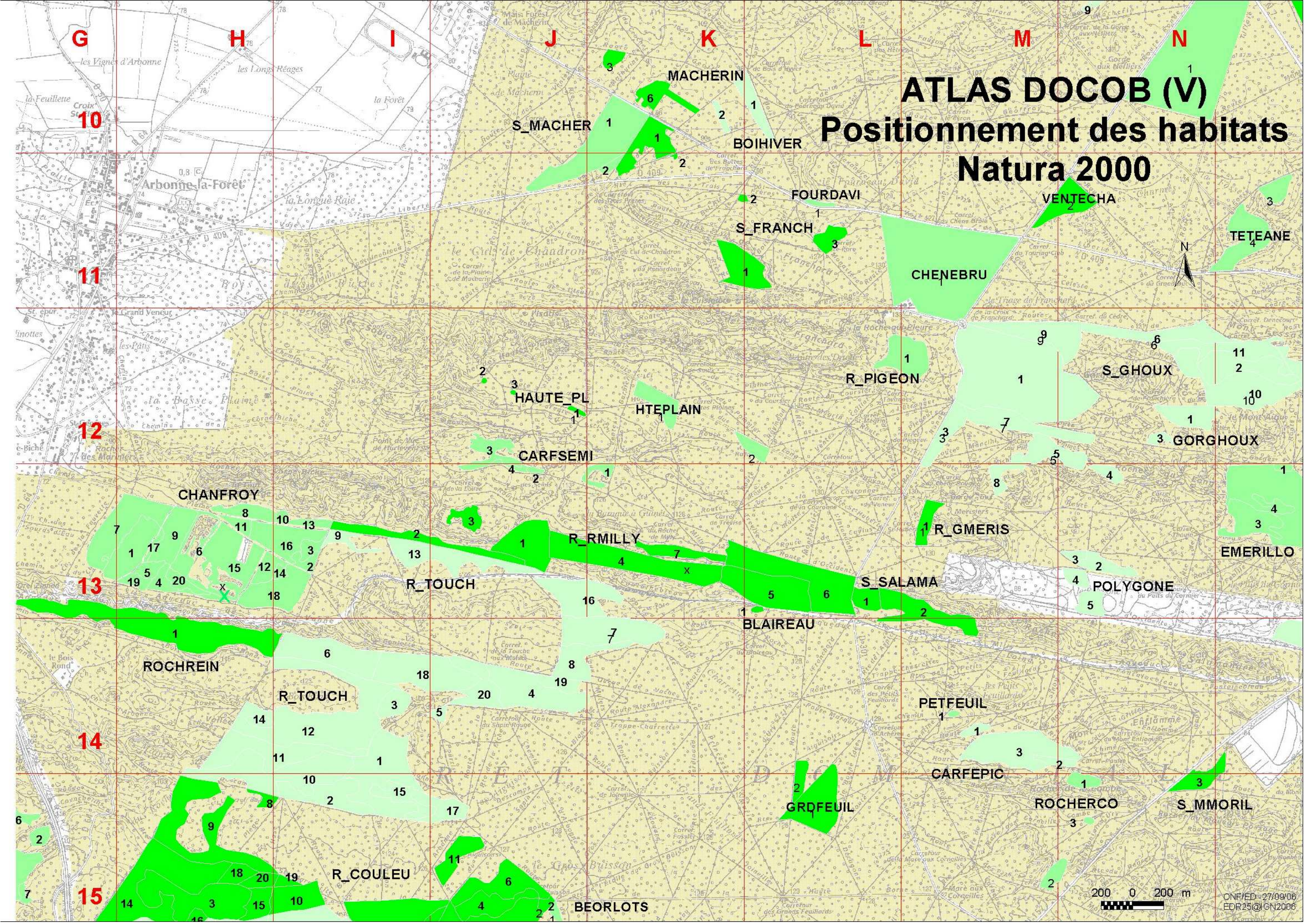


ATLAS DOCOB (IV) Positionnement des habitats Natura 2000

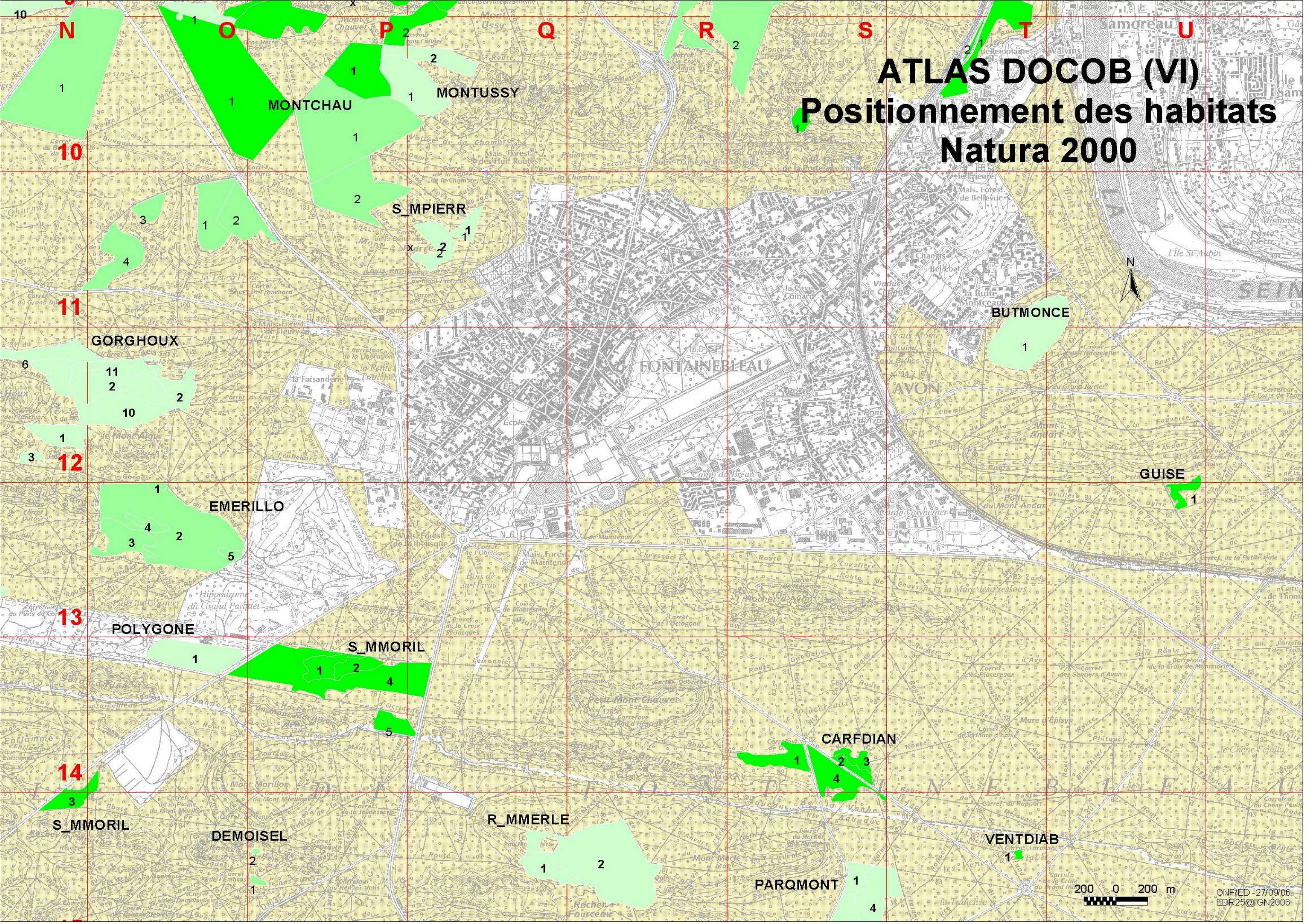


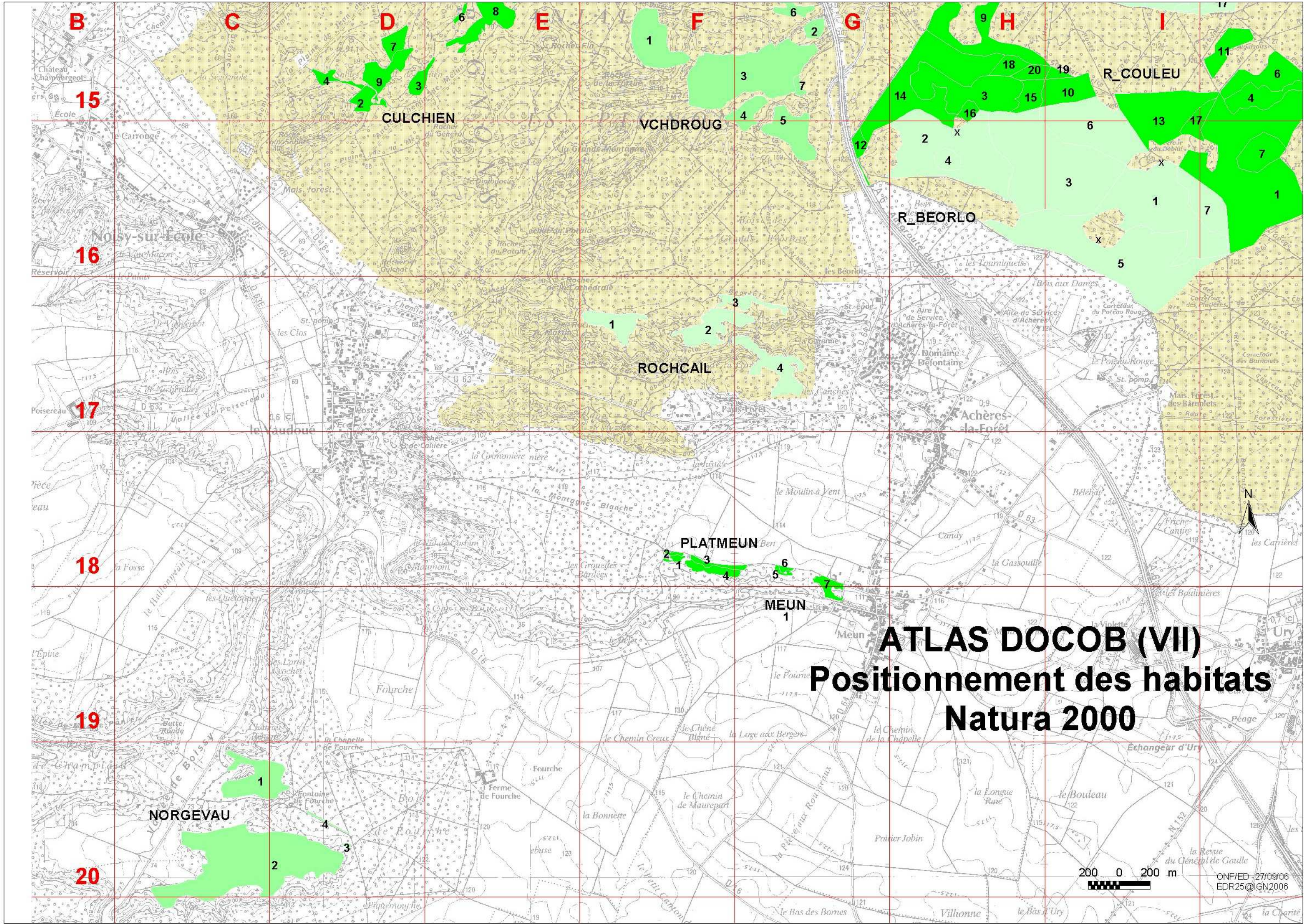
ATLAS DOCOB (V)

Positionnement des habitats Natura 2000



ATLAS DOCOB (VI) Positionnement des habitats Natura 2000

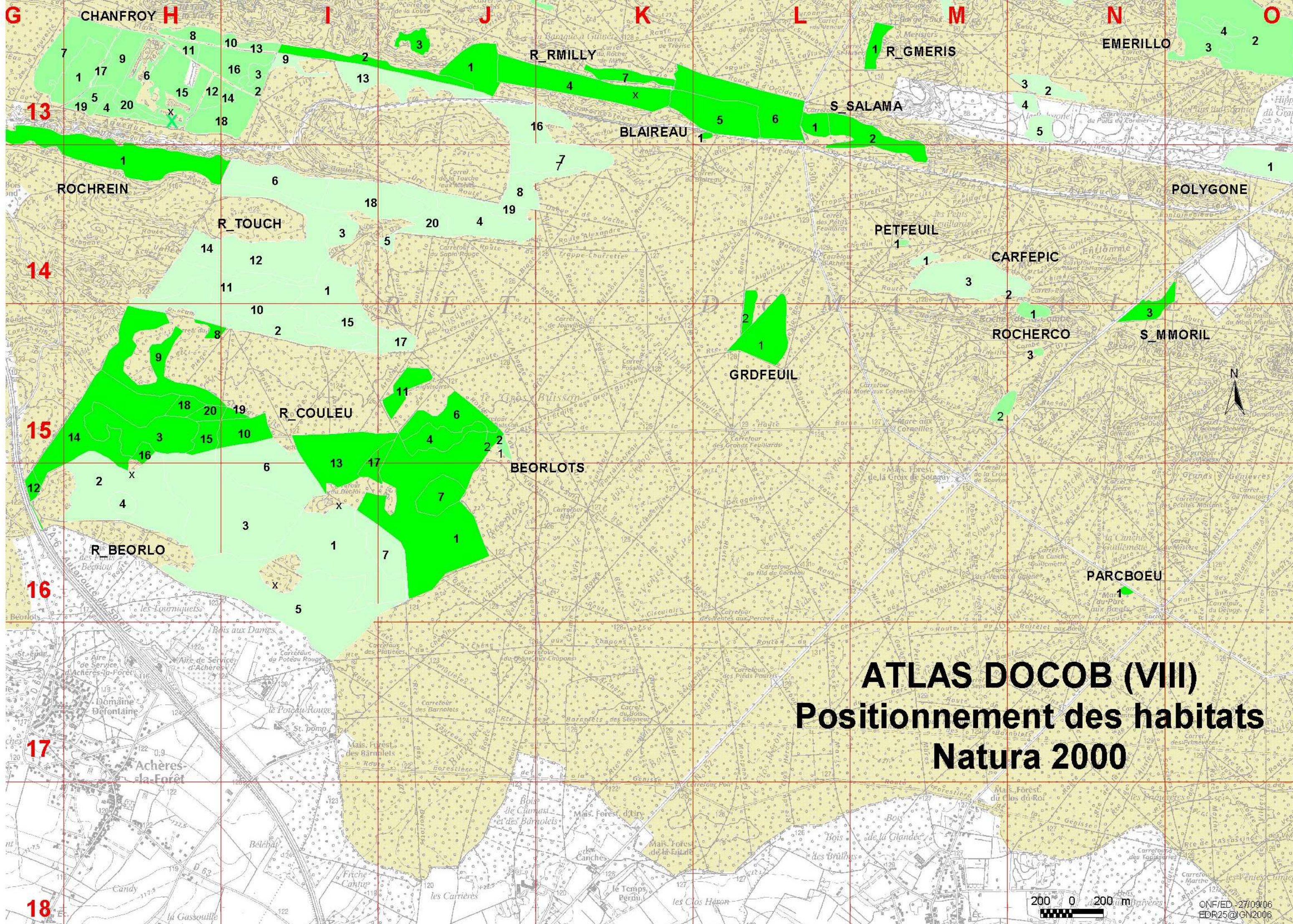




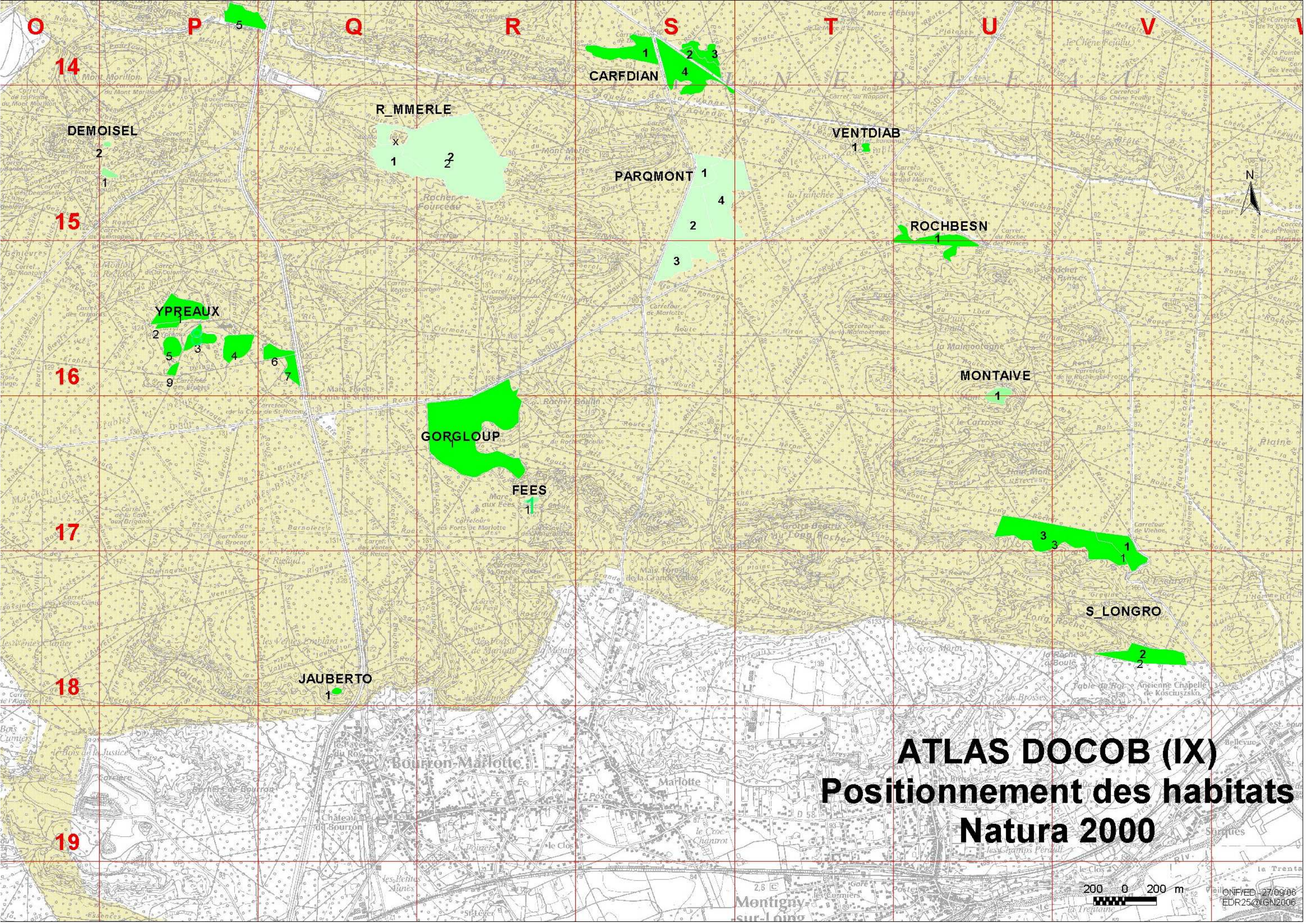
ATLAS DOCOB (VII)

Positionnement des habitats

Natura 2000



ATLAS DOCOB (VIII) Positionnement des habitats Natura 2000



14

15

16

17

18

19



200 0 200 m

ONF/ED - 27/09/06
EDR25@IGN2006

DEMOISEL

YPREAUX

GORGLOUP

JAUBERTO

Bourron-Marlotte

Marlotte

Montigny-sur-Loing

R_MMERLE

CARFDIAN

PARQMONT

VENTDIAB

ROCHBESN

MONTAIVE

S_LONGRO

ATLAS DOCOB (IX) Positionnement des habitats Natura 2000

5

1 2 3 4

x 1 2

1 4 2 3

2 5 3 4 6 7 9

FEES 1

3 3 1 1

2 2

ATLAS DOCOB (X) Positionnement des habitats Natura 2000

