










# Occupation du sol sur ru du vallot

Édité le 23 octobre 2019

## Légende

-  Masse d'eau observée
-  Unité hydrographique
-  Station qualité de l'eau

## Occupation du sol

-  Forêt ou milieu naturel
-  Agricole
-  Eau
-  Dominante habitation
-  Dominante activité
-  Transports, Equipements, espaces artificialisés autres

Échelle : 1:29298

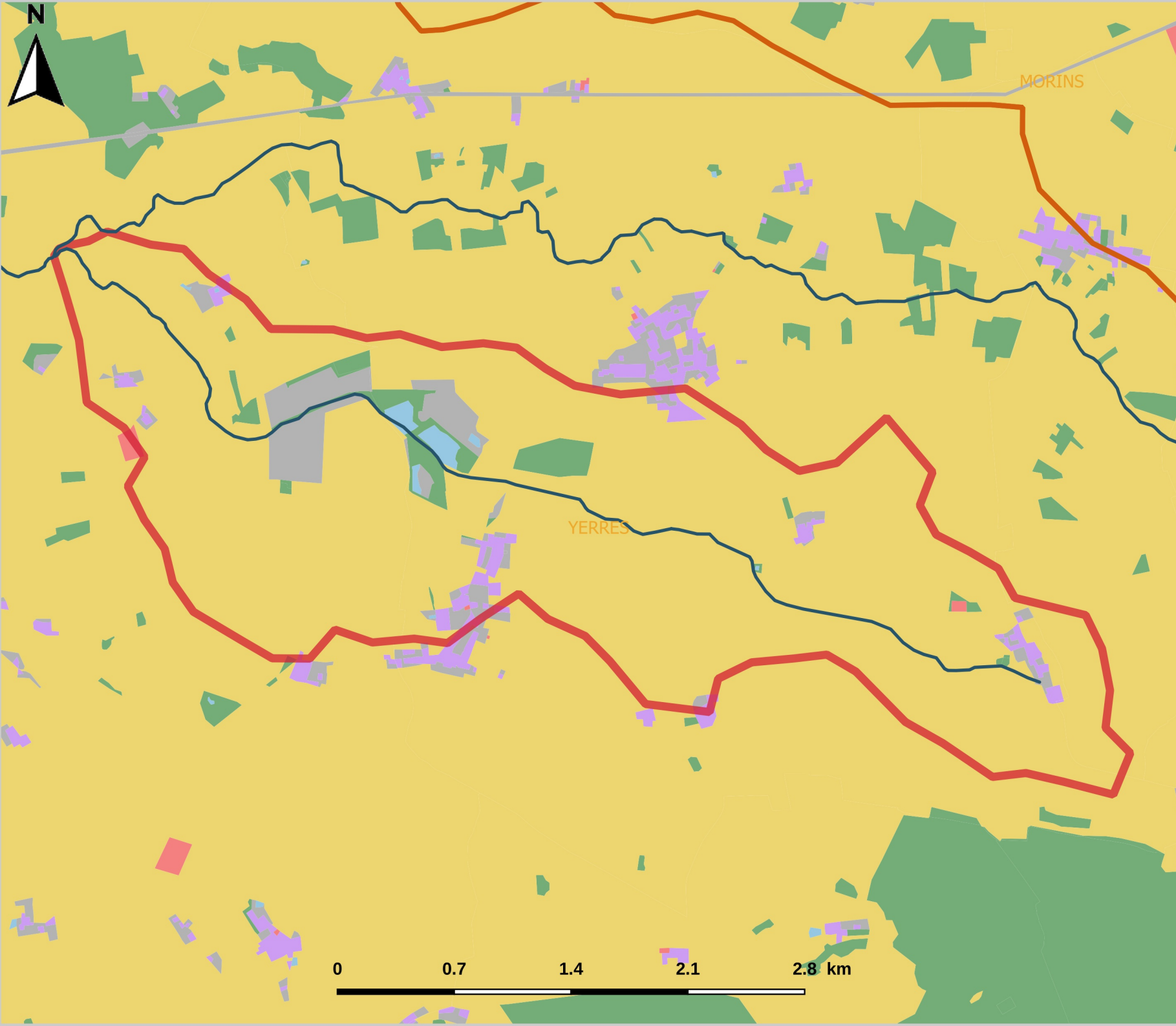
Système de coordonnées :

RGF93 / Lambert-93

Sources : MOS 2017 - SANDRE -  
IRSTEA - DRIEE



Direction Régionale et Interdépartementale  
de l'Environnement et de l'Énergie



0 0.7 1.4 2.1 2.8 km